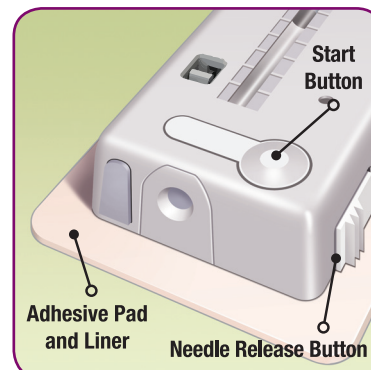
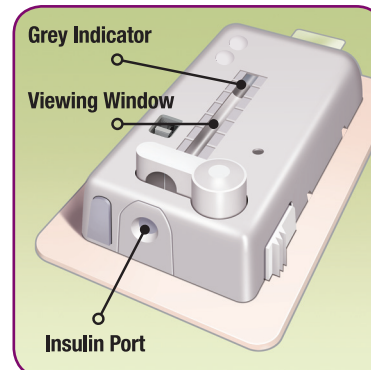
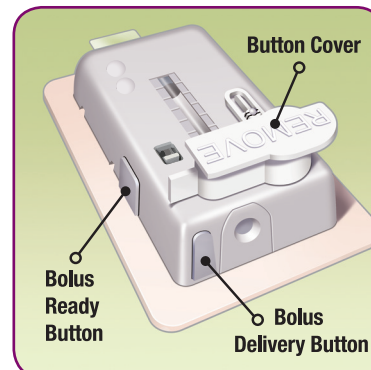


V-Go® Product Overview

Understanding the button names and locations is important for the successful use of the V-Go and V-Go EZ Fill.

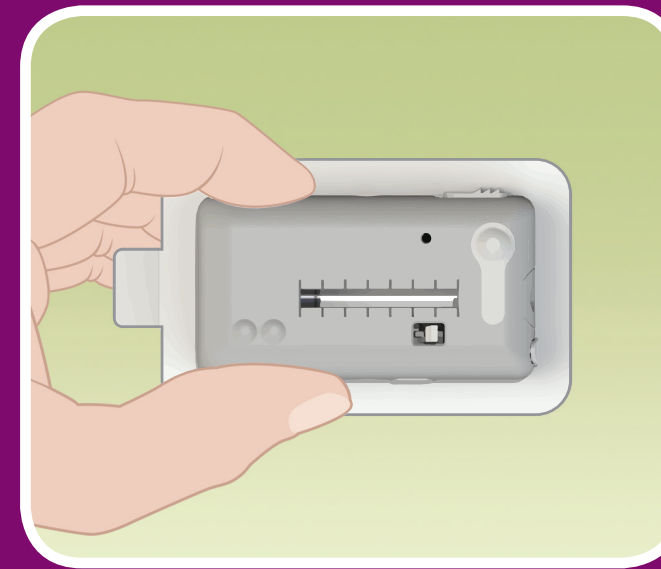


- **Button Cover:** Covers the Start Button. Prevents the Start Button from being pushed in. Cover must be removed for V-Go to operate.
- **Bolus Ready Button:** A grey button that lies flat on one of the long edges of V-Go. When pressed, it activates the Bolus Delivery Button. This is the first step to allow for bolus dosing of insulin.
- **Bolus Delivery Button:** A grey button next to the insulin port on one of the short edges of the V-Go. Pressing this button (after activated by the Bolus Ready Button) delivers a bolus dose of 2 Units of insulin (1 click = 2 Units).
- **Insulin Port:** Location where insulin enters the V-Go through the V-Go EZ Fill.
- **Viewing Window:** Shows the insulin reservoir. A grey indicator in the window demonstrates that insulin is flowing from the device.
- **Start Button:** When pressed, it inserts the needle into your skin and begins the flow of insulin into your body.
- **Needle Release Button:** A wide white button with 3 ridges on one of the long edges of V-Go. Sliding and pushing this button in removes the needle from your body and stops V-Go from delivering insulin.
- **Adhesive Pad and Liner:** Once the protective adhesive liner is removed, the adhesive pad affixes the V-Go to your skin.



Customer Care
1-866-881-1209

Using the V-Go® Wearable Insulin Delivery Device Quick Reference Guide



The Quick Reference Guide does not replace the Instructions for Patient Use or training on the V-Go.

Training on the proper use of the V-Go is important. If you have not been previously trained, speak to a V-Go Customer Care Representative at 1-866-881-1209 before using the V-Go.

Tips for Safety and Success With V-Go®



Do not use other insulin products while on V-Go therapy unless instructed by your healthcare professional.



V-Go can be worn any place where insulin can be injected and that remains flat when you sit, stand, or lie down. For best results, choose a suitable site and prepare it appropriately.



Check your blood glucose and movement of grey indicator at regular intervals (~3 times a day) to make sure V-Go is working properly. The indicator moves very slowly over the 24-hour period.



Basal rate: V-Go delivers a continuous preset basal rate of insulin over 24 hours that begins when you press and lock the Start Button. Make sure to press the Start Button to begin the flow of insulin.

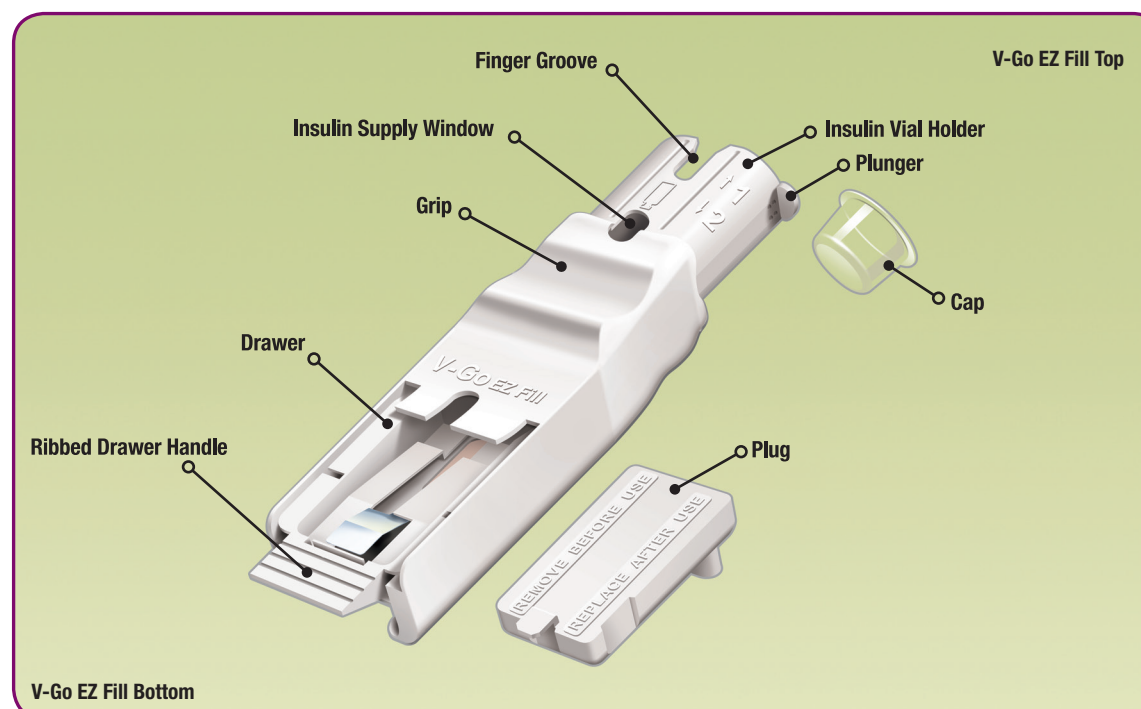


Bolus dose: Bolus dosing is a 2-step process. Each push of the Bolus Delivery Button delivers 2 Units of insulin (1 click = 2 Units). There is a maximum of 18 clicks (36 Units) in each V-Go.



After a full 24 hours of use, replace used V-Go with a new filled V-Go. If V-Go falls off or stops working, replace it with a new filled V-Go immediately.

V-Go EZ Fill® Product Overview



- **Cap:** Protects the needle inside the V-Go EZ Fill (bottom of insulin vial holder).
- **Finger Groove:** Opening to allow for easy removal of the insulin vial.
- **Insulin Vial Holder:** Opening in the V-Go EZ Fill where the insulin vial is placed upside down.
- **Insulin Supply Window:** Shows a view of the insulin remaining in the insulin vial.
- **Plunger:** When you pull this handle slowly up (about 5 seconds) and then push it down (about 25 seconds), insulin transfers from the vial into the V-Go.
- **Grip:** The left thumb occupies this groove throughout most of the filling process.
- **Drawer:** The V-Go is placed in this Drawer for filling. The Plug sits in the Drawer when the V-Go EZ Fill is not in use.
- **Ribbed Drawer Handle:** A grooved piece at the bottom end of the V-Go EZ Fill that helps with opening and closing the Drawer.
- **Plug:** When placed in the Drawer, the Plug protects the V-Go EZ Fill components between each fill.

Wearable Insulin Delivery



MannKind does not give medical advice about insulin therapy. Discuss all medical therapies with your healthcare professional.

If you have any questions regarding the operation of the V-Go or V-Go EZ Fill, speak to a V-Go Customer Care Representative at 1-866-881-1209.

If you have a medical emergency while using the V-Go, call 911, your healthcare professional, or go directly to the hospital.

Patent: www.mannkindcorp.com/patent-notice

V-GO, V-GO EZ FILL, V-GO WEARABLE INSULIN DELIVERY and MANNKIND are registered trademarks of MannKind Corporation

mannkind®

www.go-vgo.com

For more detailed instructions, please see V-Go Instructions for Patient Use.

P/N 2734-00 Rev. E 05/2024 © 2024 MannKind Corporation

Patient Worksheet

Please call 1-866-881-1209 to register

MannKind is committed to your success with the V-Go® and wants to ensure the best possible experience for you and your healthcare professional. When you tell us your healthcare professional has started you on the V-Go, we can call you after 24 hours to make sure you are using the device correctly, ensure you were previously trained, and answer any questions you may have.

Time to apply a new V-Go each day: _____

At mealtimes, use the amount of insulin prescribed by your healthcare professional (1 click = 2 Units)

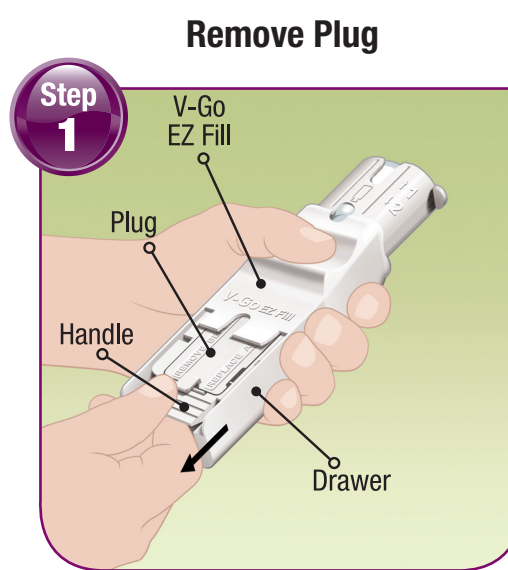
	How many times I will click the Bolus Delivery Button	How many Units of insulin
Breakfast	=	
Lunch	=	
Dinner	=	

Make sure to keep track of the number of bolus Units you give yourself at each meal.

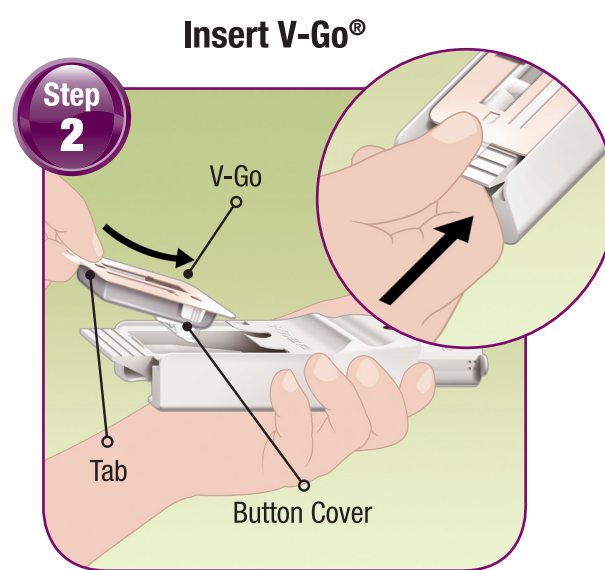
- If you lose count, STOP bolus dosing, monitor your blood glucose, and follow the plan agreed upon with your healthcare professional.

Notes:

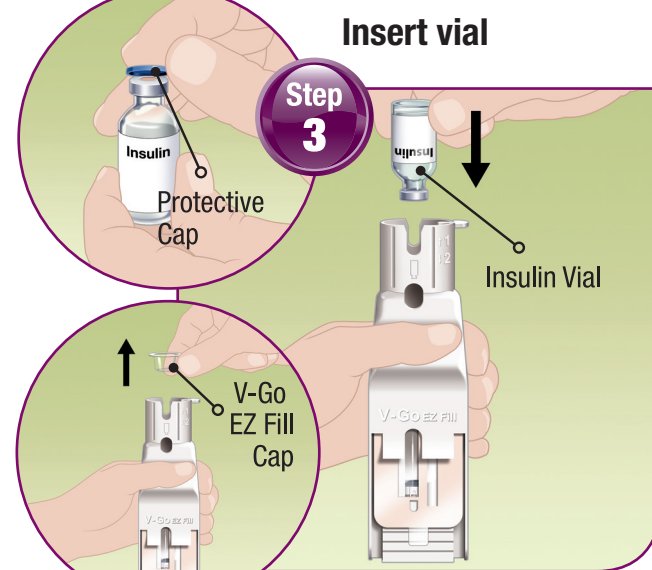
Easy to Fill



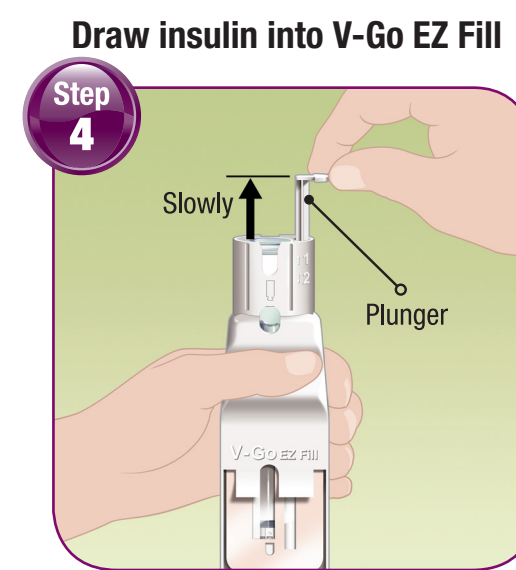
- Step 1**
- On day 1, Plug will separate from V-Go EZ Fill; therefore, skip this step
 - Place your thumb over Plug tab while gripping handle to pull Drawer out
 - Lift Plug out of V-Go EZ Fill
 - Set Plug aside



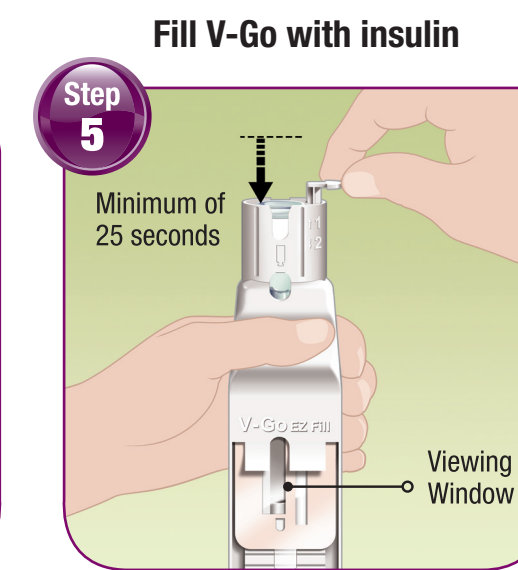
- Step 2**
- Slide V-Go into V-Go EZ Fill Drawer with Button Cover down, adhesive side up, and plastic tab at bottom
 - Hold V-Go down with thumb
 - Push Drawer all the way closed**



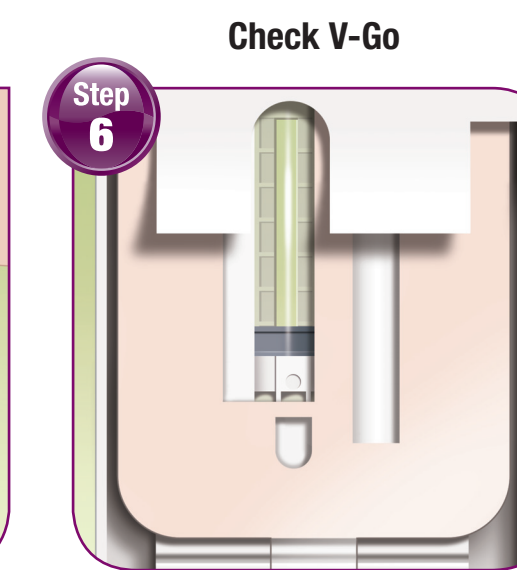
- Step 3**
- Pop protective cap off insulin vial and discard
 - Pull cap out of V-Go EZ Fill insulin vial holder and discard
 - Keep V-Go EZ Fill upright, turn insulin vial upside down and **push firmly** all the way down into insulin vial holder



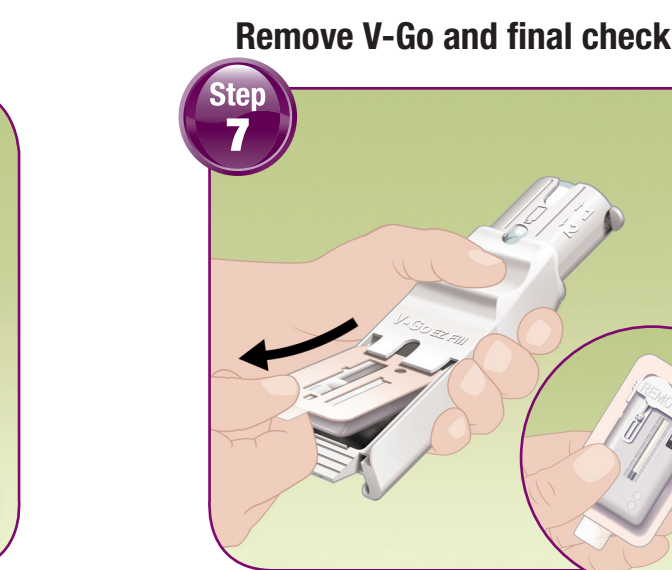
- Step 4**
- Slowly pull up Plunger as far as it can go
 - Wait 5 seconds



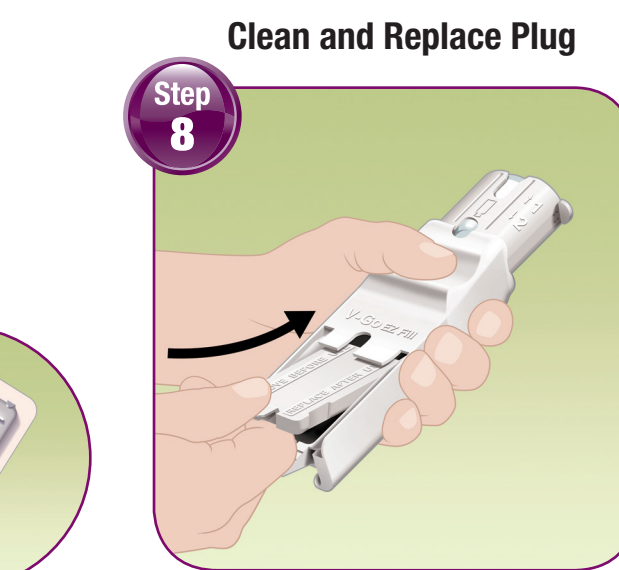
- Step 5**
- Make sure viewing window is at eye level so you can **watch V-Go fill** with insulin
 - V-Go should be filled with insulin in a continuous flow of droplets, **not** a steady stream
 - Slowly** push Plunger all the way down. This should take about 25 seconds



- Step 6**
- Check that V-Go is full of insulin.** In viewing window, you should see only fluid and no air space. Having a few small bubbles is normal and harmless
 - If V-Go is not full:
 - Push insulin vial firmly all the way into insulin vial holder
 - Replace insulin vial if empty
 - Push V-Go EZ Fill drawer all the way closed
 - Repeat Steps 4 and 5 to fill V-Go

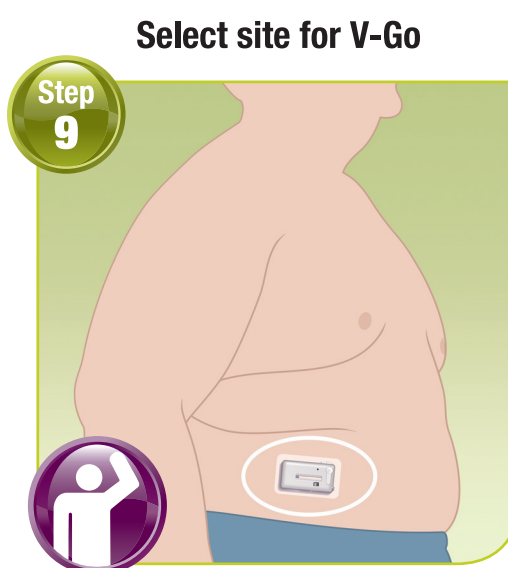


- Step 7**
- Pull Drawer all the way out
 - Lift V-Go out of V-Go EZ Fill
 - Leave Plunger in **down** position
 - After removing V-Go, look at viewing window. Rotate V-Go to make sure it is completely filled with insulin with no air bubbles larger than a grain of rice

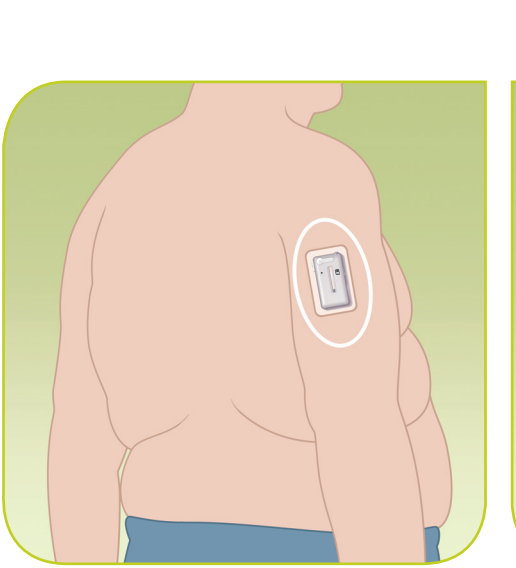


- Step 8**
- Wipe circular opening on top of Plug with an alcohol swab
 - Place Plug back into V-Go EZ Fill**
 - While holding Plug tab down, shut Drawer
 - Store V-Go EZ Fill with insulin vial and plug attached in a clean, dry area of refrigerator
 - After 30-fill use period, discard V-Go EZ Fill with insulin vial attached, even if not empty

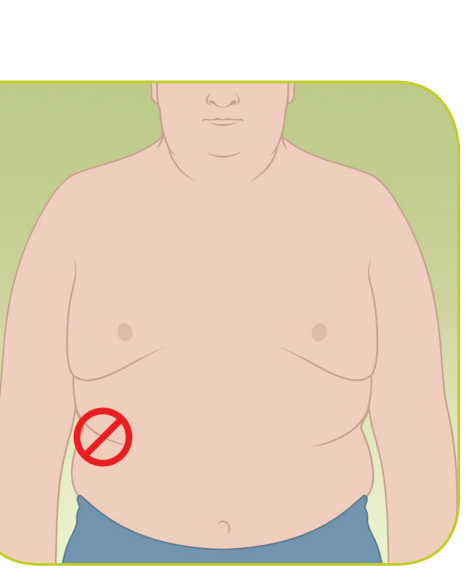
Easy to Wear



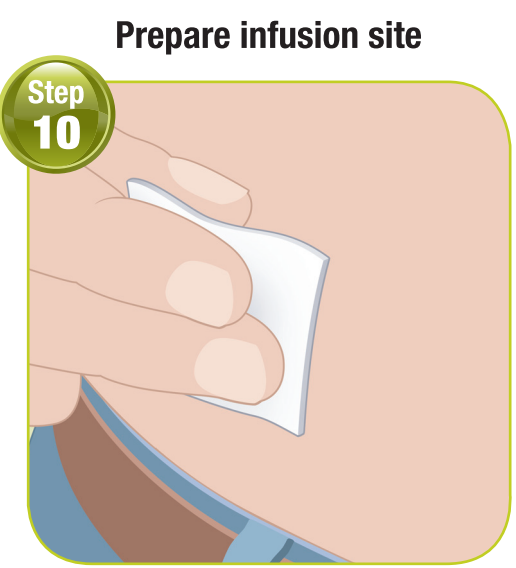
- Step 9**
- It is recommended you attach V-Go **horizontally** to your abdomen
 - You can also attach V-Go in an up and down position to backside of arm
 - Select area where you will attach V-Go
 - Practice holding V-Go on selected site to make sure you can reach all buttons and can monitor the movement of the grey indicator



- Step 10**
- Clean area with alcohol swab
 - Let area dry



- Step 11**
- Do not** apply V-Go over a fold of skin, muscle, or bone
 - Avoid areas with excessive hair or shave area to help V-Go attach



- Step 12**
- Lift adhesive tab and **completely** peel off Adhesive Liner
 - Do not touch adhesive surface
 - Before removing Adhesive Liner, hold V-Go in hand that you will use to attach it to your skin



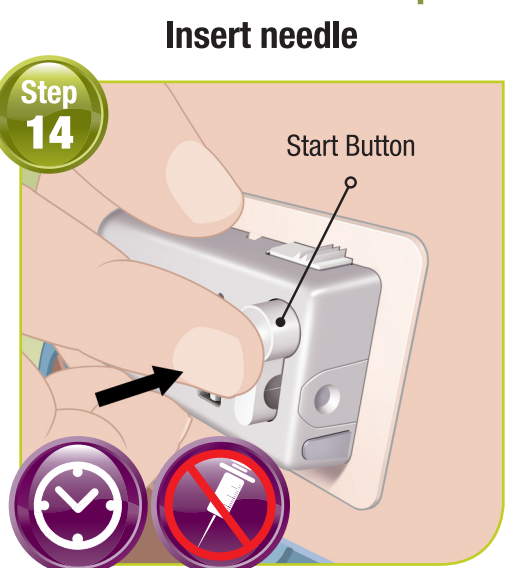
- Step 13**
- Press V-Go against skin for 5-10 seconds
 - Run your finger around adhesive pad to make sure it is attached
 - While attaching V-Go, make sure you do not press any of the buttons



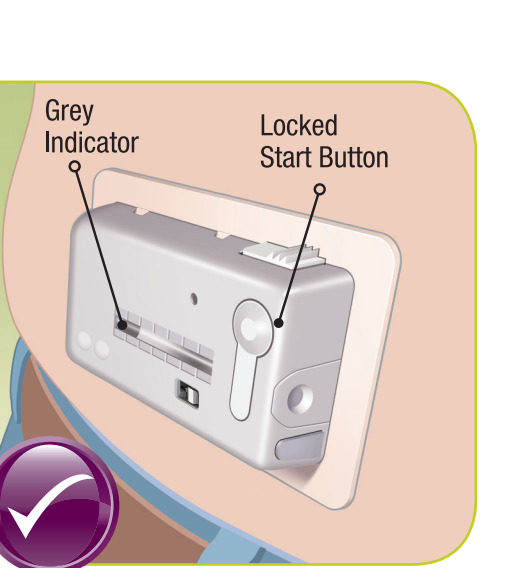
- Step 14**
- Hold V-Go against skin
 - In one firm quick motion**, press rounded top of Start Button completely into V-Go until you hear a click or button locks in place
 - Start Button **must lock** in place to begin flow of insulin
 - Check grey indicator and your blood glucose at regular intervals



- Step 15**
- Place thumb on ridged section of Needle Release Button
 - In one motion, firmly **slide and press** Needle Release Button
 - Start Button will pop out and you will be ready to remove V-Go

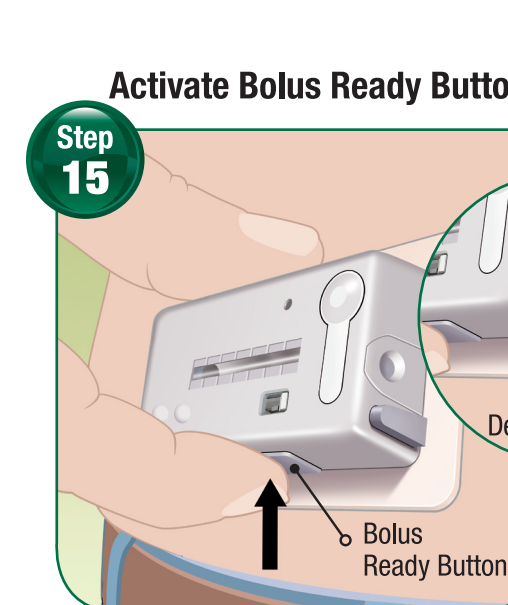


- Step 16**
- Press lightly on skin adjacent to V-Go with one hand
 - Peel V-Go away from your skin with other hand
 - If adhesive residue is left behind, use soapy water or medical adhesive removers

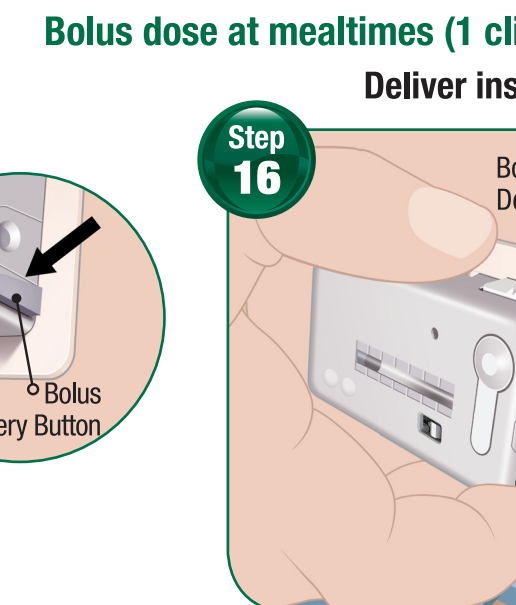


- Step 17**
- Check to make sure needle is retracted. If it is not, repeat Step 18
 - Discard used V-Go according to local disposal requirements

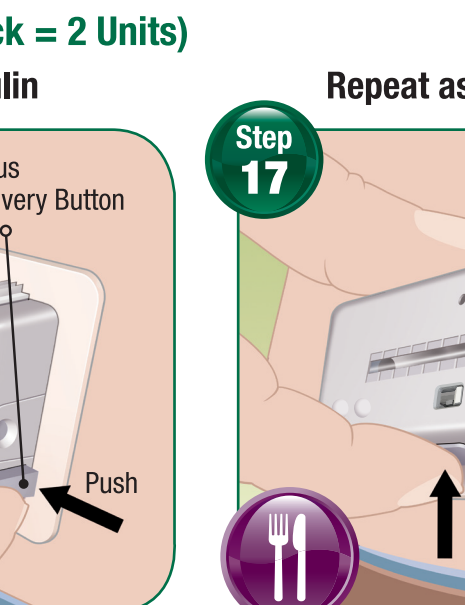
Easy to Go



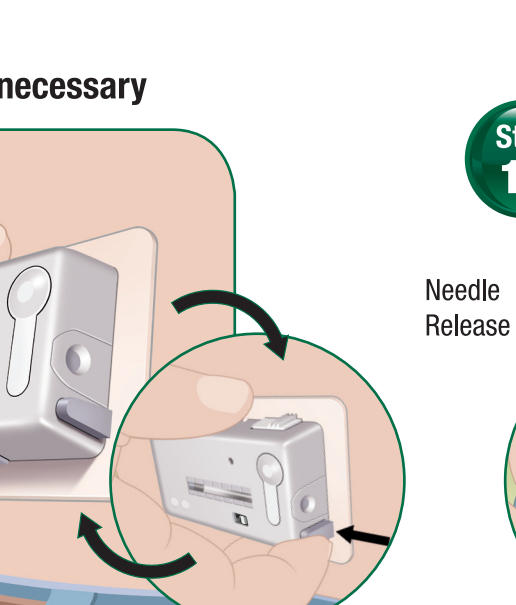
- Step 15**
- Slide your finger with pressure to locate and press Bolus Ready Button until it stops
 - You will hear another click
 - You have just delivered 2 Units of insulin (**1 click = 2 Units**)



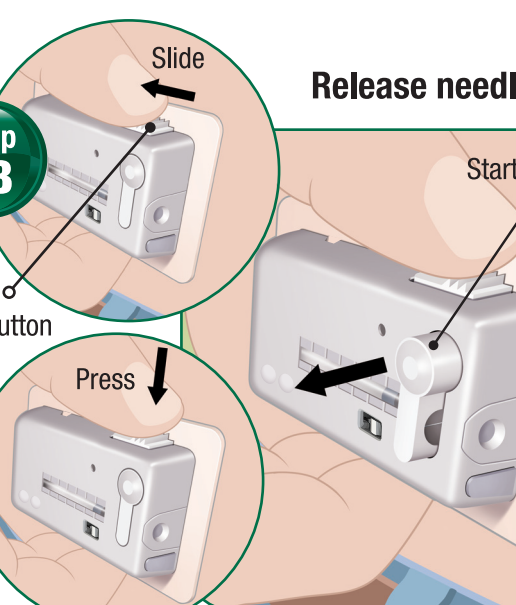
- Step 16**
- Repeat steps 15 and 16 until you reach number of bolus Units prescribed by your healthcare professional
 - Make sure to keep track of the number of bolus Units you give yourself
 - If you lose count, **STOP** bolus dosing, monitor your blood glucose, and follow the plan agreed upon with your healthcare professional



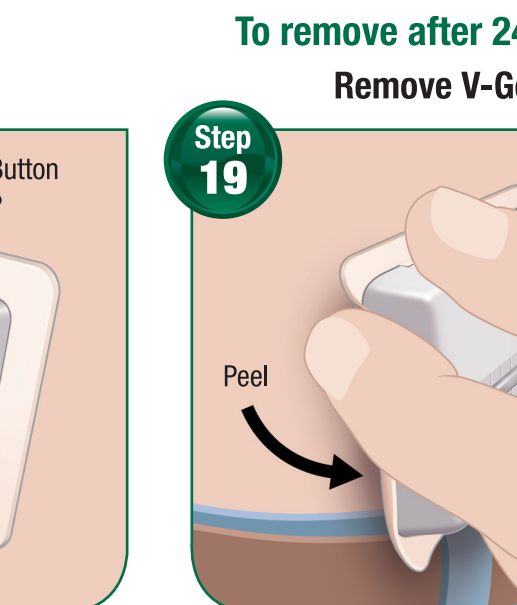
- Step 17**
- Place thumb on ridged section of Needle Release Button
 - In one motion, firmly **slide and press** Needle Release Button
 - Start Button will pop out and you will be ready to remove V-Go



- Step 18**
- Press lightly on skin adjacent to V-Go with one hand
 - Peel V-Go away from your skin with other hand
 - If adhesive residue is left behind, use soapy water or medical adhesive removers



- Step 19**
- Check to make sure needle is retracted. If it is not, repeat Step 18
 - Discard used V-Go according to local disposal requirements



- Step 20**
- Check to make sure needle is retracted. If it is not, repeat Step 18
 - Discard used V-Go according to local disposal requirements

V-Go Customer Care

If you have any questions about using V-Go or V-Go EZ Fill, speak to a V-Go Customer Care Representative at 1-866-881-1209.